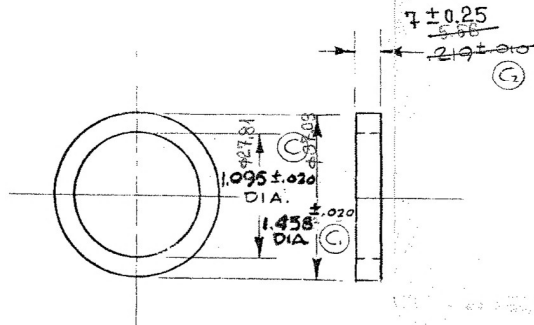


8034030

PERMISSIBLE VARIATION ON COMMON
FRACTION DIMENSIONS TO MACHINED SURFACES
TO BE ± 0.10 UNLESS OTHERWISE SPECIFIED.
FABRICATION TOLERANCE.

BREAK ALL SHARP CORNERS
UNLESS OTHERWISE SPECIFIED.

COUNTERSINK ALL TAPPED
HOLES $1.18" \times$ ONE THRU'D DEEP.



STANDARD PART

ENGINEERING APPROVAL
OF SOURCE REQUIRED

Ver No Sira No
12971

D		DIE 2606'ya göre kalınlık artırıldı. 12.02.2009					
5-7711	C2	WAS 7/32	8-17-50	8-17-50	8-17-50	8-17-50	8-17-50
	C	WAS 1 3/16 C. WAS 1 7/16	4-10-52	4-10-52	4-10-52	4-10-52	4-10-52
4-4625	B	MATE WAS 8M5 602					
		RUBBER TO CIRC.					
		TITLE WAS "GASKET."					
		APPROVAL OF SOURCE "E"					
		STANDARD PART, STAMP ADDED					
M-2939	A	REDRAWN WAS TYPED A SHEET	9-26-51	9-26-51	9-26-51	9-26-51	9-26-51
R. F. C. NO.	REV. LET.	REVISION	DATE	BY	CK.	APYD.	
FIRST USED ON		E.A-7					

MATERIAL
RUBBER

NAME OF PART

PART NO.

IT. NO.

ELECTRO-MOTIVE DIVISION
GENERAL MOTORS CORPORATION
LA GRANGE, ILLINOIS, U.S.A.

GASKET - 1/2 FLANGE

DATE OF PRINT

PART NO.

8034030